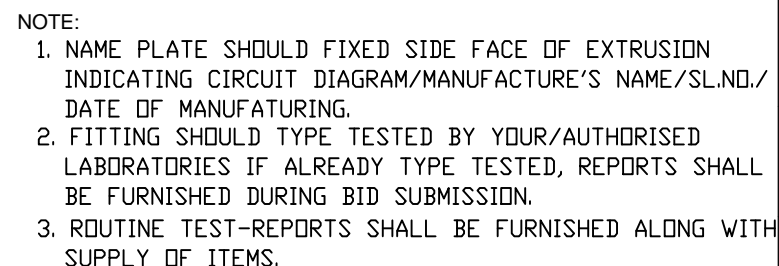
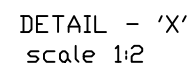
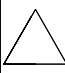
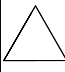
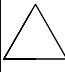
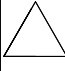

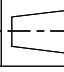
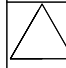



UN CONTROLLED COPY

15	1		NAME PLATE	150x75x1.6	ALUMINIUM		
14	1		18-19-30 TEFLON WIRE	LENGTH=150mm COLOUR : RED	CONNECTOR TO MAIN		
13	1		18-19-30 TEFLON WIRE	LENGTH=150mm COLOUR : BLACK	CONNECTOR TO MAIN		
12	1		18-19-30 TEFLON WIRE	LENGTH=400mm COLOUR : RED	DRIVER TO PCB		
11	1		18-19-30 TEFLON WIRE	LENGTH=400mm COLOUR : BLACK	DRIVER TO PCB		
10	2		RUBBER PAD AT MOUTING SCREW AREA		EPDM COLOUR : BLACK		
09	2		RUBBER GASKET FOR VIBRATION PROTECTION		EPDM COLOUR : BLACK		
08	2		RECTANGULAR WASHER AT MOUNTING SCRED AREA	72x35x1.6	E-GALVANIZED		
07	2		SET OF THREE POLE FEMALE CONNECTOR				
06	2		SET OF THREE POLE MALE CONNECTOR				
05	2		DRIVER 110V AC/DC 260mm				
04	1		DIFFUSER	LENGTH=596mm	POLYCARBONATE GRADE ; UL94V0		
03	2		LED MODELE				
02	2		END COVER	(MOULDING)	POLYCARBONATE		
01	1		HOUSING NATURAL ANODIZED	LENGTH=596mm (EXTRUSION)	IS:733-1983 ALLOY TEMPER 63400-WP		
SL.No.	QTY	PART / STOCK No.	DESCRIPTION	SIZE	COMPANY STD./I.S	Wt. (Kg)	
					MATERIAL		
			PRODUCT	8W CMV (SG) LPC-DMRC			
			REF DRG	KL-DEV-239			
			MATERIAL				
			HEAT TREAT.	APPD	KC Shashikanth	21.04.2018	
			SURFACE TREAT.	REVD	Jayaramu S	20.04.2018	
			TITLE	CHKD	Jitendra Yadav	20.04.2018	
			COMPARTMENT LED LIGHT FITTING-110V AC/DC (LAMP-9W LED)	DRWN	Jagadisha M	15.04.2018	
				SCALE		SHEET	Wt.(Kg)
				1:5	OF	0	
ALT.NO.	ECN NO/CHANGES	DATE	BY	CHKD	APPD	DRG No.	ALT
						946-21106	
			 BEM LIMITED				